

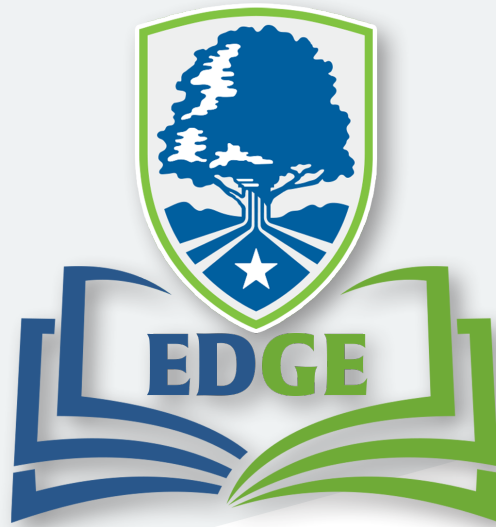
2026 Sponsorship Opportunities



Educate • Develop • Guide • Empower



ABOUT the Program



EDGE was designed to meet the educational needs of community bankers in Texas and beyond.

Hosted by the Education Foundation of the Independent Bankers Association of Texas, this two-day event is mapped to help community bankers Educate, Develop, Guide and Empower their teams to take the next steps in their careers.

Each day will include a general session, featuring thought provoking and inspiring keynote speakers. Breakout sessions focused on hot topics and important concepts in the areas of:

Compliance • Credit/Lending/Risk Management • Operations
Marketing • Leadership & Strategy • Human Resources/Wildcard

DAY 1

Breakfast + Exhibit Encounters

General Session

Refreshment Break

Breakout Sessions (x6)

Refreshment Break

Breakout Sessions (x6)

Lunch with Exhibitors

Breakout Sessions (x6)

Refreshment Break

Breakout Sessions (x6)

Refreshment Break

Breakout Sessions (x6)

Offsite Dinner and Entertainment

DAY 2

Breakfast + Exhibit Encounters

Breakout Sessions (x6)

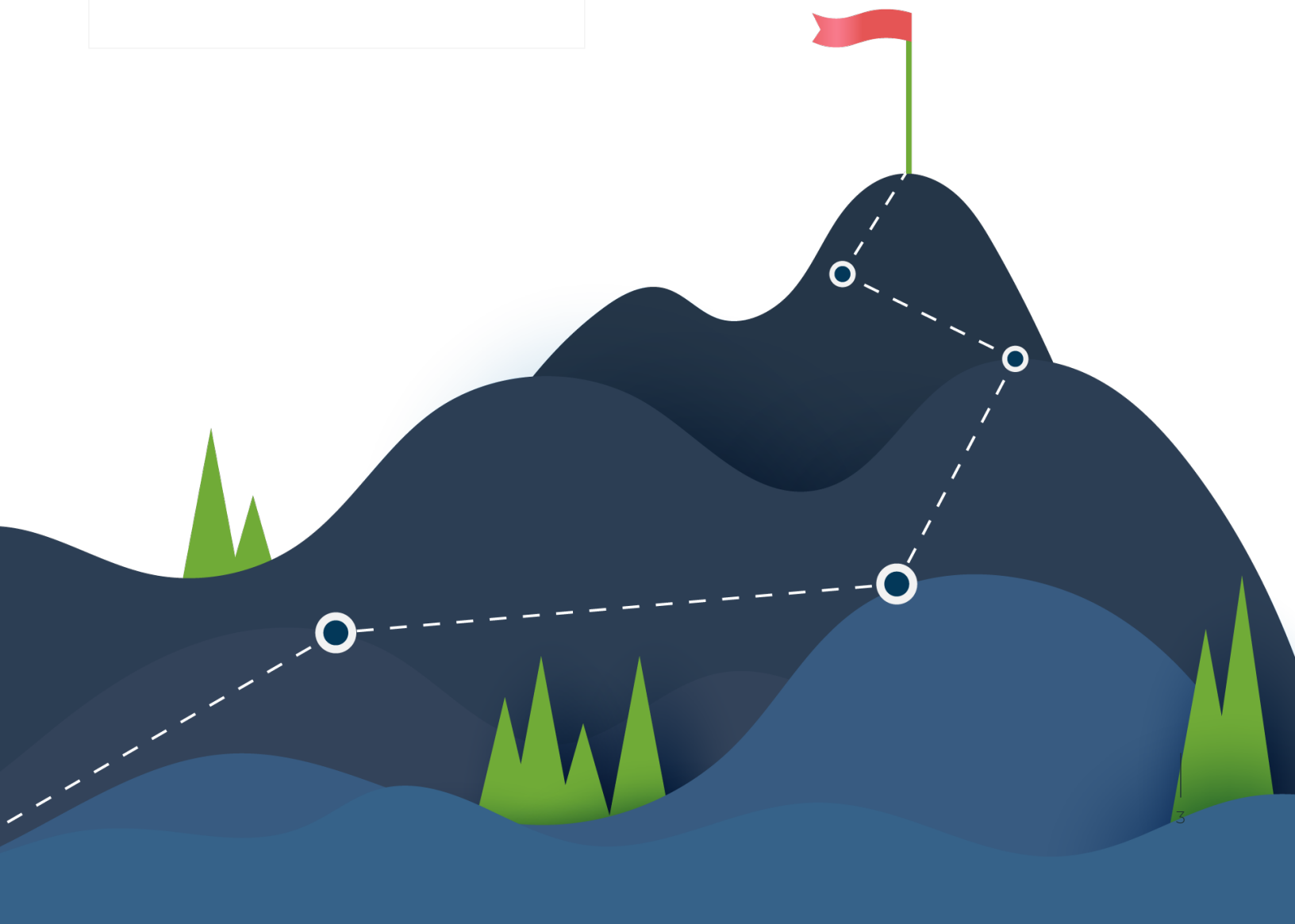
Refreshment Break

Breakout Sessions (x6)

Refreshment Break

Breakout Sessions (x6)

Closing General Session and Lunch



Diamond

Gold

Silver

Bronze

SPONSORSHIP Levels

Diamond | \$20,000-\$49,999

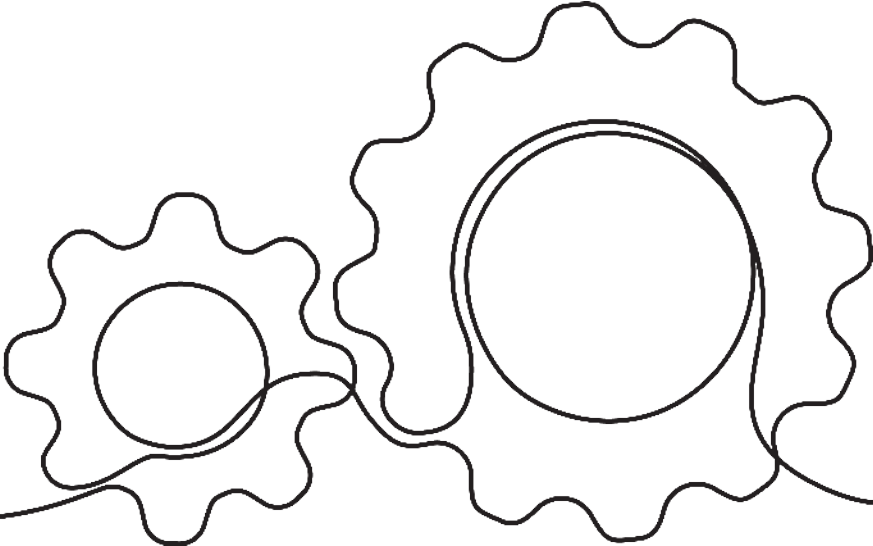
Gold | \$10,000-\$19,999

Silver | \$5,000-\$9,999

Bronze | \$1,000-\$4,999

BENEFITS of Sponsorship

	DIAMOND	GOLD	SILVER	BRONZE
	\$20,000	\$10,000	\$5,000	\$1,000
Complimentary Exhibit Encounter	✓	✓		
Verbal Recognition During the Event	Verbal intro of company reps	Verbal intro of company		
Slide Show Credit During the Event	✓ + logo	✓ + logo	✓	✓
One Complimentary Registration per \$5,000 Spent	✓	✓	✓	
Website Recognition	✓ + logo	✓ + logo	✓	✓
Recognition in Convention Promotions	✓	✓	✓	✓
Pre-Event Attendee Listing	✓	✓	✓	✓
Professional Signage at Event	✓	✓	✓	✓
Sponsor Ribbon on Badge	✓	✓	✓	✓
*Subject to timing of commitment.				



TRACK Sponsors

The IBAT EDGE event will provide attendees with six educational tracks to choose from, for a total of 48 breakout sessions over the two days. Each track sponsor will receive visibility and recognition during the breakout session sponsored, professional signage and from the stage.

Price: \$3,000



Compliance



Credit/Lending/
Risk Management



Human Resources/
Wildcard



Operations



Leadership &
Strategy



Marketing



BREAKFAST Sponsorship

The most important meal of the day is breakfast and you can sponsor it day one or day two. The sponsoring companies will be recognized on signage, in printed materials and from the stage.

Price: \$2,500

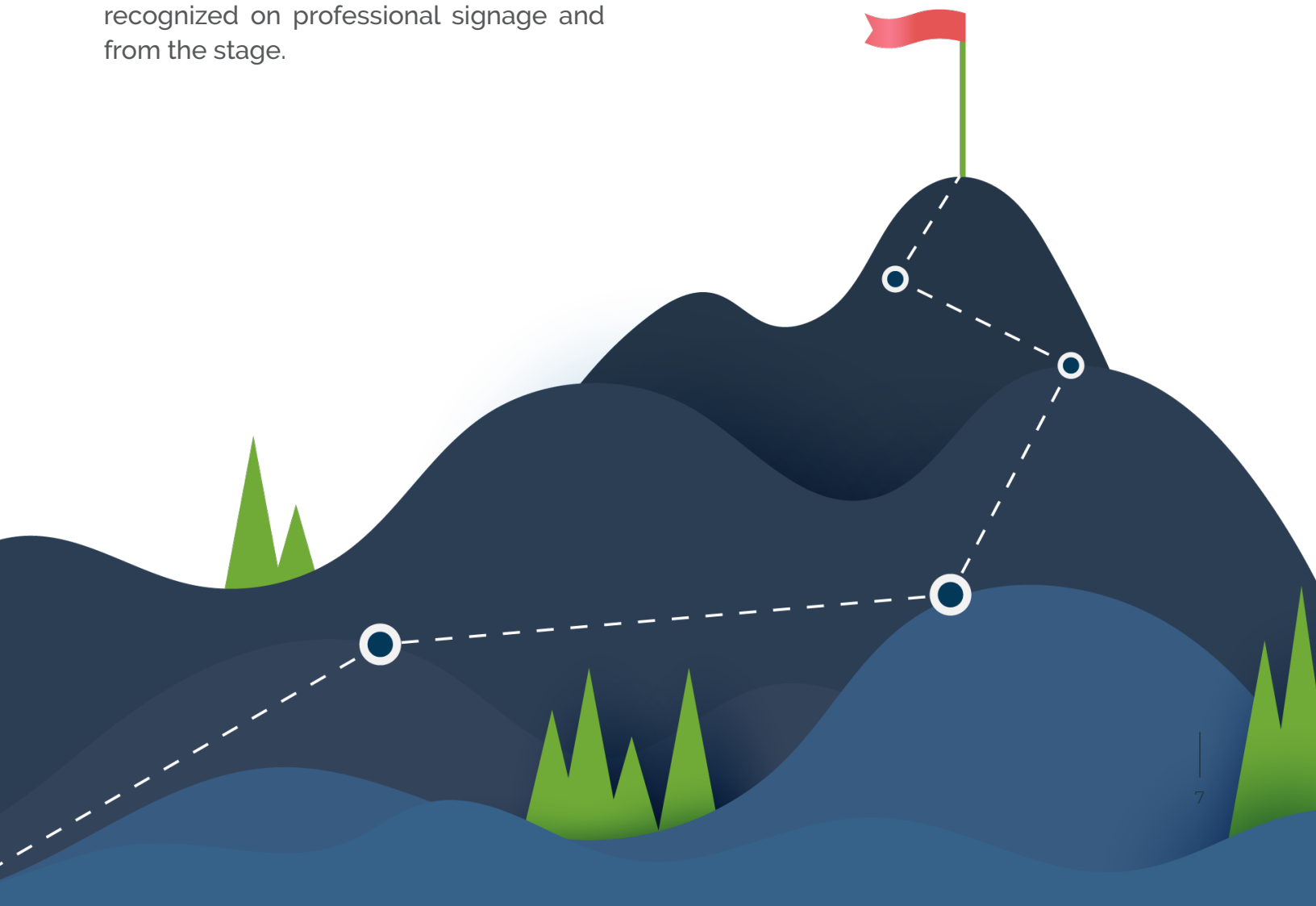
Available: 3 per day (6 total)

LUNCH BUFFET Sponsorship

Help sponsor one of two lunches provided. Your company's name/logo will be displayed on the buffet on the day you choose to sponsor. Company will be recognized on professional signage and from the stage.

Price: \$3,500

Available: 4 per day (8 total)



RECEPTION SPONSORSHIPS

FULL RECEPTION

During the offsite reception, attendees will be mingling and networking with fellow bankers and sponsors. This opportunity allows your company to co-sponsor the offsite evening reception during the event. The sponsoring companies will be recognized on signage, in printed materials and from the stage.

Price: \$2,500
Available: 3

TRANSPORTATION

We will travel to The Backyard Stage & Grill for a fun attendee reception that will allow for networking in a more informal setting. The transportation sponsor will be able to address attendees on the bus, as well as pass out branded items, as desired.

Price: \$1,500
Available: 2





GENERAL SPONSORSHIPS

BREAK Sponsors

Sponsor the coffee service stations available to attendees during concurrent sessions and breaks. Sponsoring companies will be recognized on professional signage and printed materials.

Price: \$1,000
Available: 6

LANYARDS Sponsor

Exclusive distribution of the official lanyards with your company's message and/or logo to ALL attendees registered for EDGE. Note: It can be a "stock item" and not specific to the event. Recognition includes event signage and printed materials.

Price: \$2,500
Available: 1



WiFi Sponsor

Exclusive sponsor of the conference WiFi will be able to pick the network name and/or password. The sponsoring company will be recognized on professional signage and printed materials.

Price: \$2,500
Available: 1

DOOR PRIZE Sponsor

Drawings for cash prizes will be held throughout the general sessions on both days. Sponsoring company will be recognized on professional signage and printed materials.

Price: \$3,000
Available: 1





GENERAL Session

Sponsor one of the two general sessions - Anne Grady keynote or the CEO/Leadership panel. Your company's logo will be prominently displayed throughout the session. Sponsoring companies will be recognized on professional signage and from the stage.

Price: \$5,000

Available: 2

TWO-DAY EXHIBIT Encounter

Exhibit encounters will be available on both days of IBAT EDGE. These are not your traditional exhibits! We're setting up high-boys with one screen for your company to demo its product(s). Includes one registration. Additional registrations available at \$995. Visit ibat.org/edge.

Price: \$2,500

Available: 35 total



CONTACT US

If your company would like to sponsor any of the opportunities provided, reach out to Beth Sheahan.



**Commitment
Deadline:
FRIDAY,
March 27!**

Phone & Email
512-275-2202 | bsheahan@ibat.org