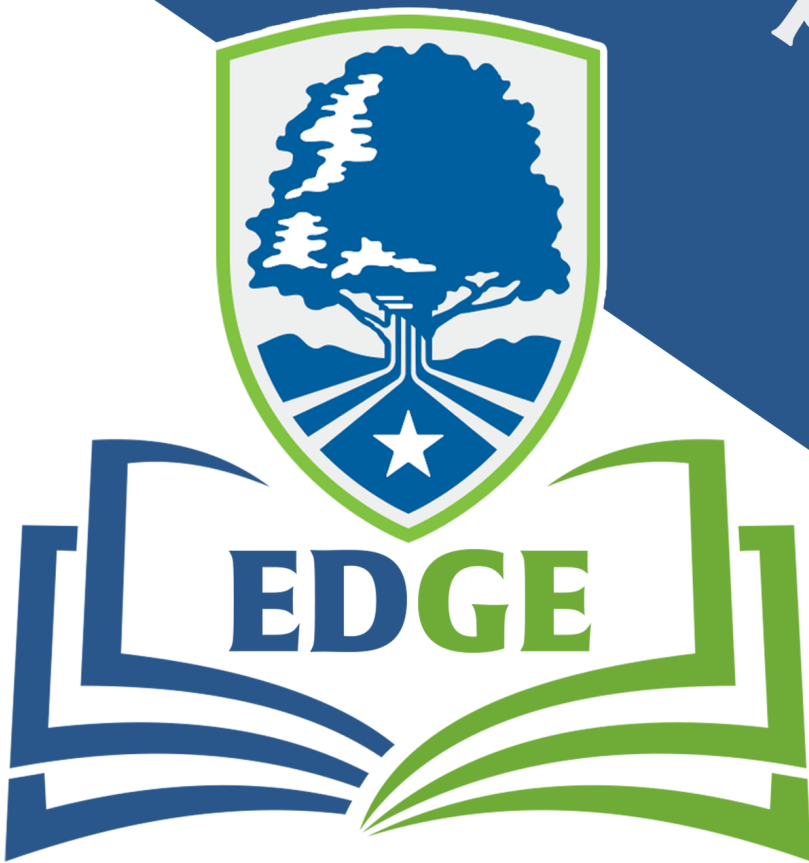


Independent Bankers  
Association of Texas

# Sponsorship Opportunities



Educate • Develop • Guide • Empower



IBAT's EDGE is a new event designed to meet the educational needs of community bankers in Texas and beyond.

Hosted by the Education Foundation of the Independent Bankers Association of Texas, this two-and-a-half-day event is designed to help community bankers Educate, Develop, Guide and Empower their teams to take the next steps in their careers.

# ABOUT the Program

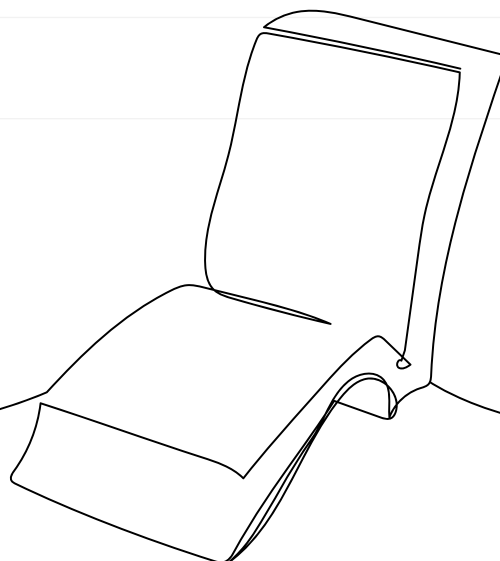
Each day will be anchored by a general session featuring thought provoking and inspiring keynote speeches before attendees split into breakout sessions focused on hot topics and important concepts in the areas of:

Information Security • Credit/Lending • Strategy  
Operations • Emerging Technology • Compliance

# AGENDA

*Subject to Change.*

DAY 1	
8:30 a.m.-9:30 a.m.	General Session + Breakfast
9:30 a.m.-10:00 a.m.	Refreshment Break
10:00 a.m.-11:00 a.m.	Breakout Sessions (x6)
11:00 a.m.-11:15 a.m.	Break
11:15 a.m.-12:15 p.m.	Breakout Sessions (x6)
12:15 p.m.-2:00 p.m.	Lunch with Exhibitors
2:00 p.m.-3:00 p.m.	Breakout Sessions (x6)
3:00 p.m.-3:15 p.m.	Refreshment Break
3:15 p.m.-4:15 p.m.	Breakout Sessions (x6)
4:15 p.m.-5:30 p.m.	Reception



## DAY 2

7:30 a.m.-8:30 a.m.	Breakfast
8:30 a.m.-9:30 a.m.	Breakout Sessions (x6)
9:30 a.m.-10:00 a.m.	Refreshment Break
10:00 a.m.-11:00 a.m.	Breakout Sessions (x6)
11:00 a.m.-11:15 a.m.	Break
11:15 a.m.-12:15 p.m.	Breakout Sessions (x6)
12:15 p.m.-2:00 p.m.	Lunch with 2nd Set of Exhibitors
2:00 p.m.-3:00 p.m.	Breakout Sessions (x6)
3:00 p.m.-3:15 p.m.	Refreshment Break
3:15 p.m.-4:30 p.m.	General Session
4:30 p.m.-5:30 p.m.	Reception

## DAY 3

7:30 a.m.-8:30 a.m.	Breakfast
8:30 a.m.-12:30 p.m.	Deep-Dive Workshop + Lunch

**Strategic**

**Diamond**

**Gold**

**Silver**

**Bronze**

**Blue Ribbon**

## **SPONSORSHIP** Levels

---

**Strategic: \$50,000+**

**Diamond: \$20,000-\$49,999**

**Gold: \$10,000-\$19,999**

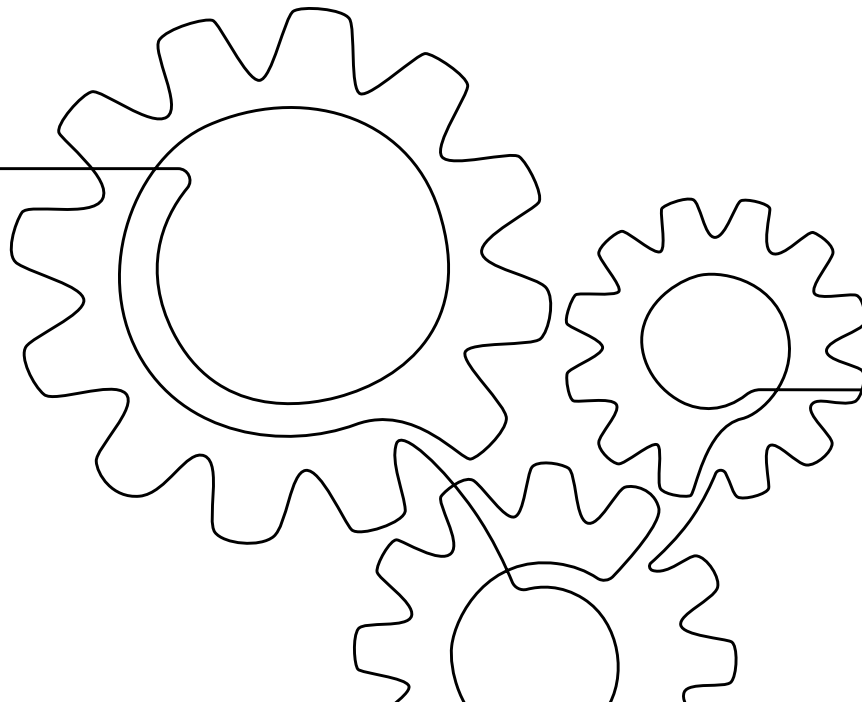
**Silver: \$5,000-\$9,999**

**Bronze: \$2,500-\$4,999**

**Blue Ribbon: \$1,000-\$2,499**

# BENEFITS of Sponsorship

	STRATEGIC	DIAMOND	GOLD	SILVER	BRONZE	BLUE RIBBON
	\$50,000	\$20,000	\$10,000	\$5,000	\$2,500	\$1,000
Complimentary Exhibit Encounter	✓	✓	✓			
Verbal Recognition During the Event	Verbal intro of company reps, plus podium time	Verbal intro of company reps	Verbal intro of company			
Slide Show Credit During the Event	✓ + logo	✓ + logo	✓ + logo	✓	✓	✓
One Complimentary Registration per \$5,000 Spent	✓	✓	✓	✓		
Website Recognition	✓ + logo	✓ + logo	✓ + logo	✓	✓	✓
Recognition in Convention Promotions	✓	✓	✓	✓	✓	✓
Pre-Event Attendee Listing	✓	✓	✓	✓	✓	✓
Professional Signage at Event	✓	✓	✓	✓	✓	✓
Sponsor Ribbon on Badge	✓	✓	✓	✓	✓	✓
*Subject to timing of commitment.						



# SPONSORSHIPS AVAILABLE

## **BREAKFAST** Sponsorship

The most important meal of the day is breakfast and you can sponsor it day one or day two. The sponsoring companies will be recognized on signage, in printed materials and from the stage.

Price: \$2,500  
Available: 3 per day (9 total)





# **FOOD STATION** Sponsorship

Each day, instead of a traditional group lunch, we're planning a food truck style set-up where attendees can roam around, pick their favorite type of food and network during lunch. This is available on days 1 and 2 only.

Price: \$2,500  
Available: 4 per day (8 total)

# SPONSORSHIPS AVAILABLE

## RECEPTION Bar

Attendees can enjoy beverages, available during the day 1 and day 2 receptions. The sponsoring companies will be recognized on signage, in printed materials and from the stage.

Price: \$2,500  
Available: 4 per day (8 total)

## RECEPTION Food

During day 1 and day 2 receptions, attendees will be mingling and networking with fellow bankers and sponsoring companies. This opportunity allows your company to co-sponsor one reception during the event. The sponsoring companies will be recognized on signage, in printed materials and from the stage.

Price: \$1,500  
Available: 2 per day (4 total)



## **DAY THREE** Workshop + Lunch

Exclusively sponsor the day 3 breakfast, deep-dive workshop and lunch. The sponsoring companies will be recognized on signage, in printed materials and from the stage.

Price: \$5,000  
Available: 2

# SPONSORSHIPS AVAILABLE

## **TRACK** Sponsors

The IBAT EDGE event will provide attendees with six educational tracks to choose from, for a total of 48 breakout sessions over the two days. Each track sponsor will receive visibility and recognition during the breakout session sponsored, professional signage and from the stage.

Price: \$2,000  
Available: 6 per day (12 total)



## **BREAK** Sponsors

Sponsor the coffee service stations available to attendees during concurrent sessions and breaks. Sponsoring companies will be recognized on professional signage and printed materials.

Price: \$1,000  
Available: 6

## **LANYARDS** Sponsors

Exclusive distribution of the official lanyards with your company's message and/or logo to ALL attendees registered for EDGE. Note: It can be a "stock item" and not specific to the event. Recognition includes event signage and printed materials.

Price: \$2,500  
Available: 1

# INDIVIDUAL ITEMS

## **DOOR PRIZE** Sponsors

Drawings for cash prizes will be held throughout the general sessions on all three days. Sponsoring company will be recognized on professional signage and printed materials.

Price: \$3,000  
Available: 1

## **WiFi** Sponsor

Exclusive sponsor of the conference WiFi will be able to pick the network name and/or password. The sponsoring company will be recognized on professional signage and printed materials.

Price: \$2,500  
Available: 1



## **EXHIBIT** Encounter

Exhibit encounters will be available on days one and two of IBAT EDGE. These are not your traditional exhibits! We're setting up high-boys with one screen for your company to demo its product(s). You can purchase a tabletop on day 1 or day 2.

Price: \$1,500/day

Available: 30 per day

# CONTACT US

*If your company would like to sponsor  
any of the opportunities provided, reach  
out to Beth Sheahan.*

Phone & Email  
512-275-2202 | [bsheahan@ibat.org](mailto:bsheahan@ibat.org)